

GENERAL DESCRIPTION

- Top :
AISI 304 stainless steel top 2 mm thick with a 55 mm high edge having 18 mm radius and return to underside

- Chassis :
one-piece seam welded stainless steel chassis 2 mm thick duct at the back

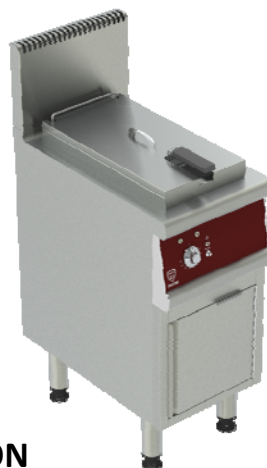
- Legs :
. 200 mm high stainless steel legs with adjustable PVC feet (0/+30mm) - diam. : 60mm

- General :
AISI 304 side and front panels 1.2 mm thick
Enamel control panel
Chrome coated aluminium knob

Natural gas flow G20/20 :	1,16 m3/h
---------------------------	-----------

Propane gas flow G31/37 :	0,85 kg/h
---------------------------	-----------

REFERENCE : 40-G1FR13L



APPLIANCE DESCRIPTION

Dimensions (mm) : W400 x D 700 x H 280

- Top :
. 13L capacity tank, 1 mm thick, with cold and heat zones and a 20 mm high edge to prevent debris from falling in the cooking oil
. oil level warning marks
. drain valve in the underbody
. removable lid in AISI 304 stainless steel, 1 mm thick
. Equipment: 1 baskets with a capacity of 2.5 kg.
. P: 11kW - Heating by torch burners in stainless steel immersion nozzles with pilot light, inter-ignition system and safety thermocouple; Controlled by gas valve type "stop / ignition / full fire"
. Limit thermostat 210 ° C.

- Base :
. Cupboard with removable AISI304 stainless steel floor with slides for positioning of the recovery tank.

- Output 9 kg/h blanched chips

CODE	DIMENSIONS	ALIMENTATION	PUISSANCE	POIDS
V07161	400 x 700 x 900 mm	1-230V+N+E	11 kW (GaS)	-

OPTIONS	CODE
PLEASE CONSULT	-
-	-
-	-
-	-
-	-
-	-
-	-
-	-
-	-
-	-

ACCESSOIRES	CODE
-	-
-	-
-	-



<p>● Connexion gaz Gas connection Gasanschluss Conexión gas</p>	<p>⚡ Connexion électrique Electric connection Elektrische Verbindung Conexión eléctrica</p>	<p>⚡ Options Options Aufantrage Opciones</p>	<p>⊕ Connexion eau froide Cold water connection Kaltwasseranschluss Conexión agua fría</p>	<p>⊕ Connexion eau chaude Hot water connection Warmwasseranschluss Conexión agua caliente</p>	<p>⊕ Connexion eau adoucie ≤ 3bars-1.h...7°F Softened water connection ≤ 3bars-7°F Wasserzulauf (gefiltertes wasser < bars-ab: 7°F/GH) Conexión agua blanda ≤ 3 bars-1.h...7°F</p>	<p>⊕ Ecoulement eaux usées sewage outflow wasserablauf desagüe</p>
<p>● Ø15x21 (1/2")</p> <p>⚡ 1~230V + PE Ø1.5mm²</p> <p>⊕</p> <p>⊕</p> <p>⊕ Ø30</p>						
<p>V07161 PRO700-40-GI FRI3L-11KW</p>						