



COLD ZONE FRYER - COLD ZONE FRYER 2x7 L/36 kg/h.

BRIDGE UNIT

Pro 900

Summary

Energy :

ELEC

Code :

V02487

Designation :

R-E2FR0708

Dimensions (W x D x H) :
425 x 900 x 320/380 mm
Power : 8x2 kW (elec)
Voltage/Electric p. : 3~400V+N+E / 8 x 2
Weight :

DEVICE DESCRIPTION

General description

Chassis :

One-piece seam welded 18-10 stainless steel chassis, 1,5 to 3 mm thick, assembled by high intensity electrical welds.

Top :

Top (frame) in 18-10 stainless steel, 30/10 thickness, with 55 mm front flanged edge and plywood.

Fryer : 2 wells 2 x 7 L / 2 x 8 kW :

. Deep-drawn tank with radiated angles in 10/10 and 20/10 thick stainless steel for the upper plume

Capacity: 2 x 7 liters:

. Cold zone and expansion zone

. Min-max oil level marks

. Drain valve in the base

. Removable cover in 18-10 stainless steel, 10/10 thick

Heating :

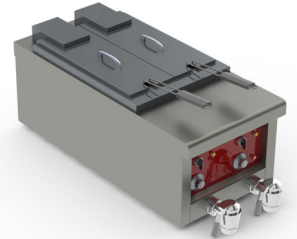
. Removable immersion heaters voltage: 3 ~ 400V + N + T, power: 8 kW

. Switch and indicator light on the front

. Regulation by thermostat and indicator on the immersion heater cover

. Safety by limiting thermostat with manual reset

. Immersion heater positioning safety micro-contact



Natural gas flow G20/20 :

Propane gas flow G31/37 :

OPTIONS

CODE

S/S rear panel fitted in factory W : 425 x H : 265 mm

V01290

ACCESSORIES

CODE

Additional large fryer basket

09138A



<p>Connexion gaz Gasanschluss Gasanschluss Conexión gas</p>	<p>Connexion électrique Elektrische connection Elektrische verbindung Conexión eléctrica</p>	<p>Options Optionen Aufträge Opciones</p>	<p>Connexion eau froide Cold water connection Kaltwasseranschluss Conexión agua fría</p>	<p>Connexion eau chaude Hot water connection Warmwasseranschluss Conexión agua caliente</p>	<p>Connexion eau adoucie Softened water connection Wasserzulauf (gef. filtertes wasser ≤ bars-ab: 7°GH) Conexión agua blanda ≤ 9 bars-ch...7° F</p>	<p>Ecoulement eaux usées sewage outflow wasserablauf desagüe</p>
				<p>1 ~ 230V +PE Ø1.50mm²</p>		
				<p>v02487 PRO900-1/2R-E2FR0708</p>		



LES AUTHENTIQUES DE LA CUISSON

CHARVET

1170 rue principale - BP3 - 38850 Charavines - FRANCE

Tél: +33 (0)4 76 06 64 22 - info@charvet.fr

www.charvet.fr



YouTube

