



COLD ZONE FRYER – COLD FRYER 9 L/20 kg/h.

BRIDGE UNIT

Pro 900

Summary

Energy :

ELEC

Code :

V02215

Designation :

R-E1FR0909

Dimensions (W x D x H) :
425 x 900 x 320/380 mm
Power : 9 kW (elec)
Voltage/Electric p. : 3~400V+N+E / 9
Weight :

DEVICE DESCRIPTION

General description

Chassis :

One-piece seam welded 18-10 stainless steel chassis, 1,5 to 3 mm thick, assembled by high intensity electrical welds.

Top :

Top (frame) in 18-10 stainless steel, 30/10 thickness, with 55 mm front flanged edge and plywood.

Fire safety :

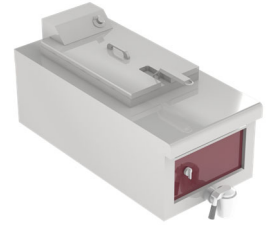
Do not place one of the fryers side by side with one or more of the following appliances: open fires, stone grills, wok, etc. (appliances with open burners) in order to prevent any risk of the oil igniting.

Deep fryer :

- . Tank capacity 9 liters: stamped at radiated angles in stainless steel thickness 10/10 and 20/10 for the upper plume
- . Cold zone and expansion zone
- . Minimum & maximum oil level marks
- . Front drain valve
- . Removable cover in 18-10 stainless steel 10/10 thickness

Heating :

- . Removable immersion heaters voltage 3 ~ 400V + N + T, power 9 kW
- . Switch and indicator light on the front
- . Thermostat and indicator on the immersion heater cover
- . Safety by limiting thermostat with manual reset
- . Immersion heater positioning safety micro-contact
- . Chassis (only if several stoves):
- . Assembly frame in 18-10 stainless steel tube 30 x 60 x 1 mm and profiles in 18-10 stainless steel sheet 30/10 thick, with plates for fixing the stoves



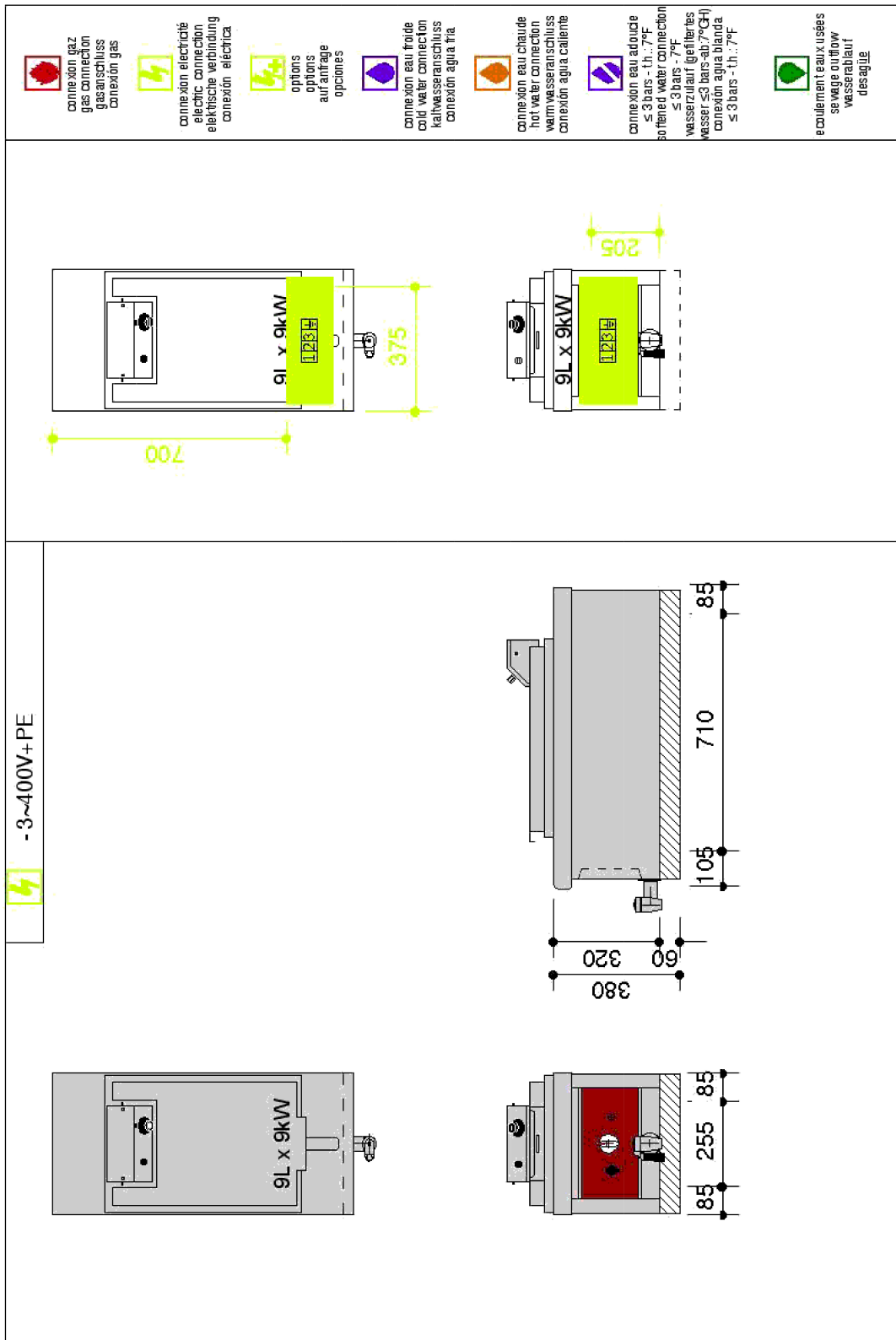
Natural gas flow G20/20 :

Propane gas flow G31/37 :

OPTIONS	CODE
Drain tap to the front included in bridge unit - replace door+tank	Included
Equipment for a 24V remote control contactor(s) not supplied	V00878
Terminal block for energy saver device to regulate energy	V02427
2 x 1/2 fryer baskets in place of 1 large basket	V02214

ACCESSORIES	CODE
Additional large fryer basket	06733A
S/S fish plate use in large basket only	F02921





LES AUTHENTIQUES DE LA CUISSON

CHARVET

1170 rue principale - BP3 - 38850 Charavines - FRANCE

Tél: +33 (0)4 76 06 64 22 - info@charvet.fr

www.charvet.fr



YouTube

