



BRAISING PANS – BRAISING PAN 60 dm²/120 L.

MANUAL WHEEL TILT

Pro 900

Summary

Energy :

ELEC

Code :

V02074

Designation :

E1SBM60i

Dimensions (W x D x H) :

1275 x 900 x 900 mm

Power : 18 kW (elec)

Voltage/Electric p. : 3~400V+N+E / 18

Weight :

DEVICE DESCRIPTION

General description

Chassis :

One-piece seam welded 18-10 stainless steel chassis, 1,5 to 3 mm thick, assembled by high intensity electrical welds and lower rear step for passage of cables and supply tubes.

Top :

Top (frame) in 18-10 stainless steel, 30/10 thickness, with 55 mm front flanged edge and plywood.

Base :

Feet, height 200 mm, in 18-10 stainless steel tube, diameter 60 mm with adjustable bases (0 / + 30).

Natural gas flow G20/20 :

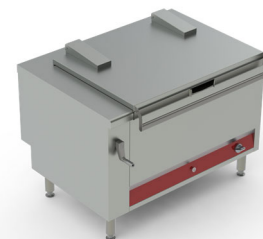
Propane gas flow G31/37 :

Braising pan :

- . 120 L / 60 dm² - capacity tank
- . 18 10 stainless steel tank with 10 mm thick base - 25/10 thick ferrule with beveled front face with large integrated spout.
- . internal dimensions (mm): W : 1015 x D : 590 x H : 250.
- . cover in 18-10 stainless steel, thickness 15/10 with hinged stainless steel spring (s) for keeping "open", and tube lever with insulating handle.
- . manual tilting by retractable handwheel, reducer and drive by disengageable chain / assistance by stainless steel spring.

Heater :

- . armored resistors plated under tank, power: 18 kW, voltage 3 ~ 400V + N + E.
- . control by energy metering device (0 - 100%) with stop position and indicator light.
- . overheating safety thermostat with automatic reset.



OPTIONS

CODE

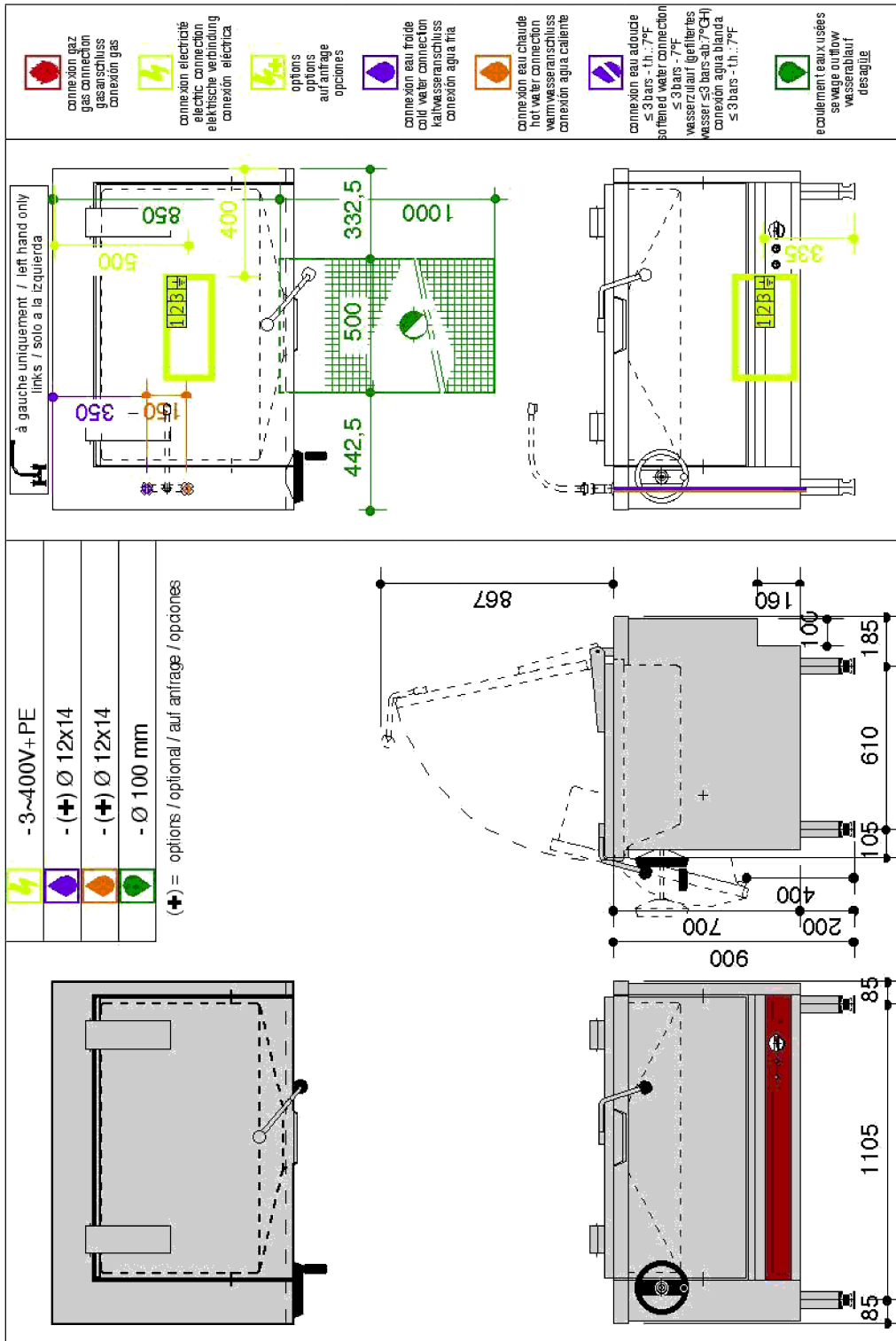
Supplement for a 10-mm thick BIMETAL base ins. 18-10 s/s 2 mm thick/out. steel 8 mm thick	V02044
Equipment for a 24V remote control contactor(s) not supplied	V00878
Terminal block for energy saver device to regulate energy	V02427
Pan tilt safety cut-out included stop heating when tilting	Included
Counter balanced lid in all positions	V00569
Removable s/s drainage system fitted in the factory	V02493
S/S rear panel fitted in factory L : 840/1265 x H : 645 mm	V01183
Mixer water tap CW/HW Ø 15x21 swivel spout : 360° - on the left side	V00561
Mixer water tap CW/HW Ø 15x21 swivel spout : 180° - on the left side	V01651
Hole cut to suit client's tap - tap supplied and fitted by client - on the left side	V01292

ACCESSORIES

CODE

S/S plinth to clamp on legs H : 170 mm for standard legs	V01188
Bain-marie adapter collar for GN containers (not supplied)	V01852





LES AUTHENTIQUES DE LA CUISSON

CHARVET

1170 rue principale - BP3 - 38850 Charavines - FRANCE

Tél: +33 (0)4 76 06 64 22 - info@charvet.fr

www.charvet.fr



YouTube

