



BOILING PANS - BOILING PANS DIRECT HEATING 150 L.

RECTANGULAR TANK

Pro 900

Summary

Energy :

ELEC

Code :

V02003

Designation :

E1MF150CD

Dimensions (W x D x H) :

850 x 900 x 900 mm

Power : 15 kW (elec)

Voltage/Electric p. : 3~400V+N+E / 15

Weight :

DEVICE DESCRIPTION

General description

Chassis :

One-piece seam welded 18-10 stainless steel chassis, 1,5 to 3 mm thick, assembled by high intensity electrical welds and lower rear step for passage of cables and supply tubes.

Top :

Top (frame) in 18-10 stainless steel, 30/10 thickness, with 55 mm front flanged edge and plywood.

Base :

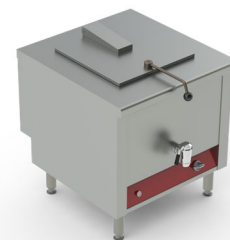
Feet, height 200 mm, in 18-10 stainless steel tube, diameter 60 mm with adjustable bases (0 / + 30).

Natural gas flow G20/20 :

Propane gas flow G31/37 :

Cooking pot :

- . Rectangular tank capacity 150 liters:
- . Boiled tank in 20/10 stainless steel, bottom of tank in 316L stainless steel and ferrule in 18-10 stainless steel, with rounded vertical and horizontal angles, sloping bottom
- . Removable strainer in 18-10 stainless steel
- . Chrome-plated bronze drain valve on the front with folding handle
- . Internal dimensions (mm): l: 730 x d: 500 x h: 400
- . Cover in 18-10 stainless steel, 15/10 thick, with stainless steel spring hinge (s) to keep it "open", and operating lever in stainless steel tube with insulating handle
- Heating: resistance frame, power 15 kW, voltage 3 ~ 400V + N + T
- .Piloting by energy metering device (0 - 100%) with stop position and indicator light



OPTIONS

CODE

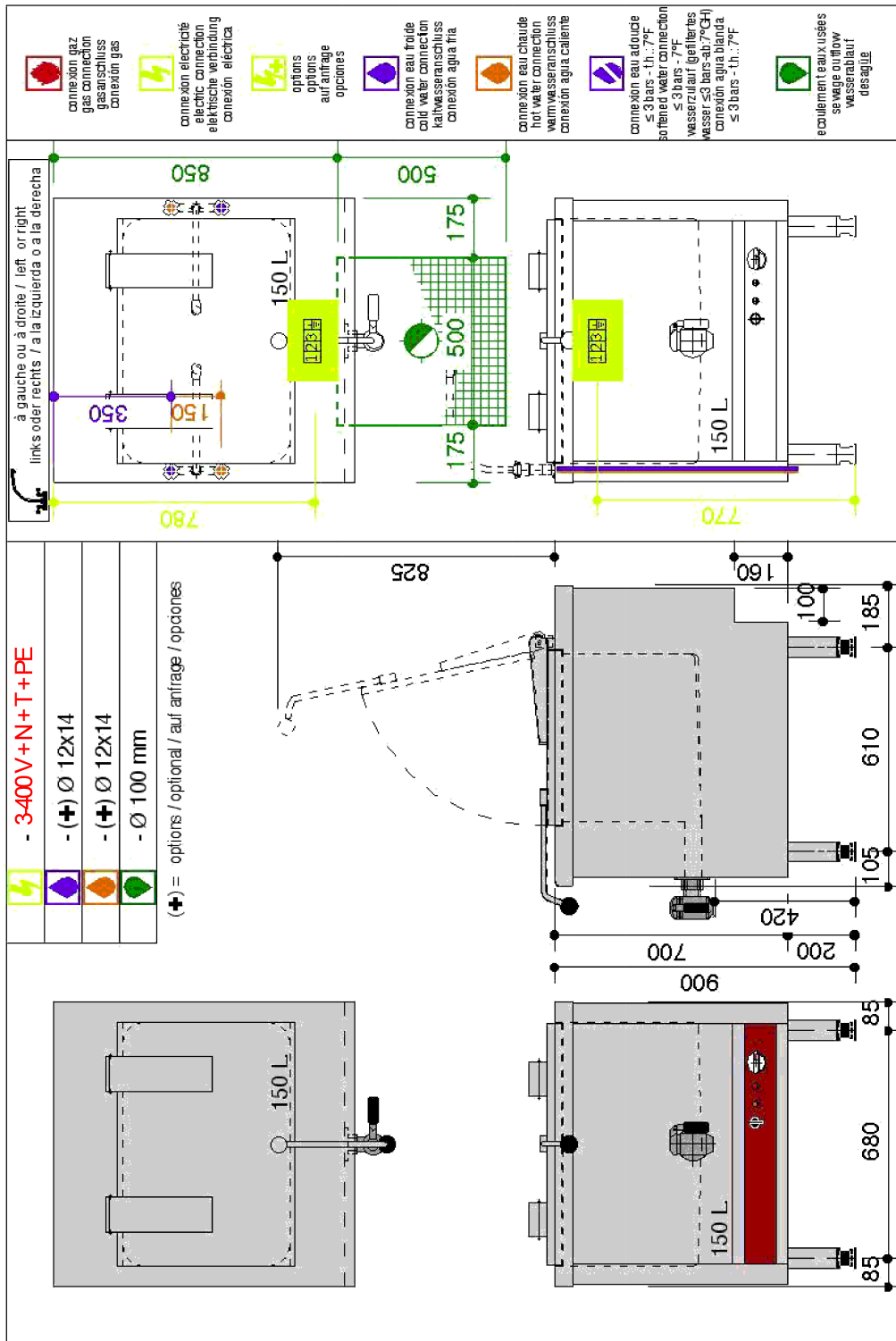
AISI 316L tank for saline and/or acid foods	V01433
Equipment for a 24V remote control contactor(s) not supplied	V00878
Terminal block for energy saver device to regulate energy	V02427
Counter balanced lid in all positions	V00569
S/S rear panel fitted in factory W : 415/840 x H : 645 mm	V01182
Mixer water tap CW/HW Ø 15x21 swivel spout 360°	V00561
Mixer water tap CW/HW Ø 15x21 swivel spout 180°	V01651
Hole cut to suit client's tap - tap supplied and fitted by client	V01292

ACCESSORIES

CODE

S/S plinth to clamp on legs H : 170 mm for standard legs	V01187





LES AUTHENTIQUES DE LA CUISSON

CHARVET

1170 rue principale - BP3 - 38850 Charavines - FRANCE

Tél: +33 (0)4 76 06 64 22 - info@charvet.fr

www.charvet.fr



YouTube

