



HALF MODULE UNIT - 2 BOILING PLATES 300 x 300 MM

BRIDGE UNIT

Pro 900

Summary

Energy :

ELEC

Code :

V01982

Designation :

R-E300

Dimensions (W x D x H) :

425 x 900 x 320/380 mm

Power : 6 kW (elec)

Voltage/Electric p. : 3~400V+N+E / 6

Weight :

DEVICE DESCRIPTION

General description

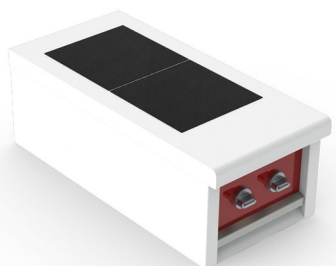
Chassis :

One-piece seam welded 18-10 stainless steel chassis,

1,5 to 3 mm thick, assembled by high intensity electrical welds.

Top :

Top (frame) in 18-10 stainless steel, 30/10 thickness, with 55 mm front flanged edge and plywood.



Above :

- . 1 set 2 baking sheets:
- . Fixed armored cast iron plates 300 x 300 mm
- . Power 2 x 3 kW - voltage 3 ~ 400V + N + T
- . 3-stage switches with indicator lights
- . Integrated temperature limiters
- . 18-10 stainless steel cleanliness drawer on the front
- . Chassis (only if several stoves):
- . Assembly frame in 18-10 stainless steel tube 30x60 mm high, and profiles in 18-10 thick stainless steel sheet 30/10, with stove mounting plates

Natural gas flow G20/20 :

Propane gas flow G31/37 :

OPTIONS

CODE

Equipment for a 24V remote control contactor(s) not supplied

V00878

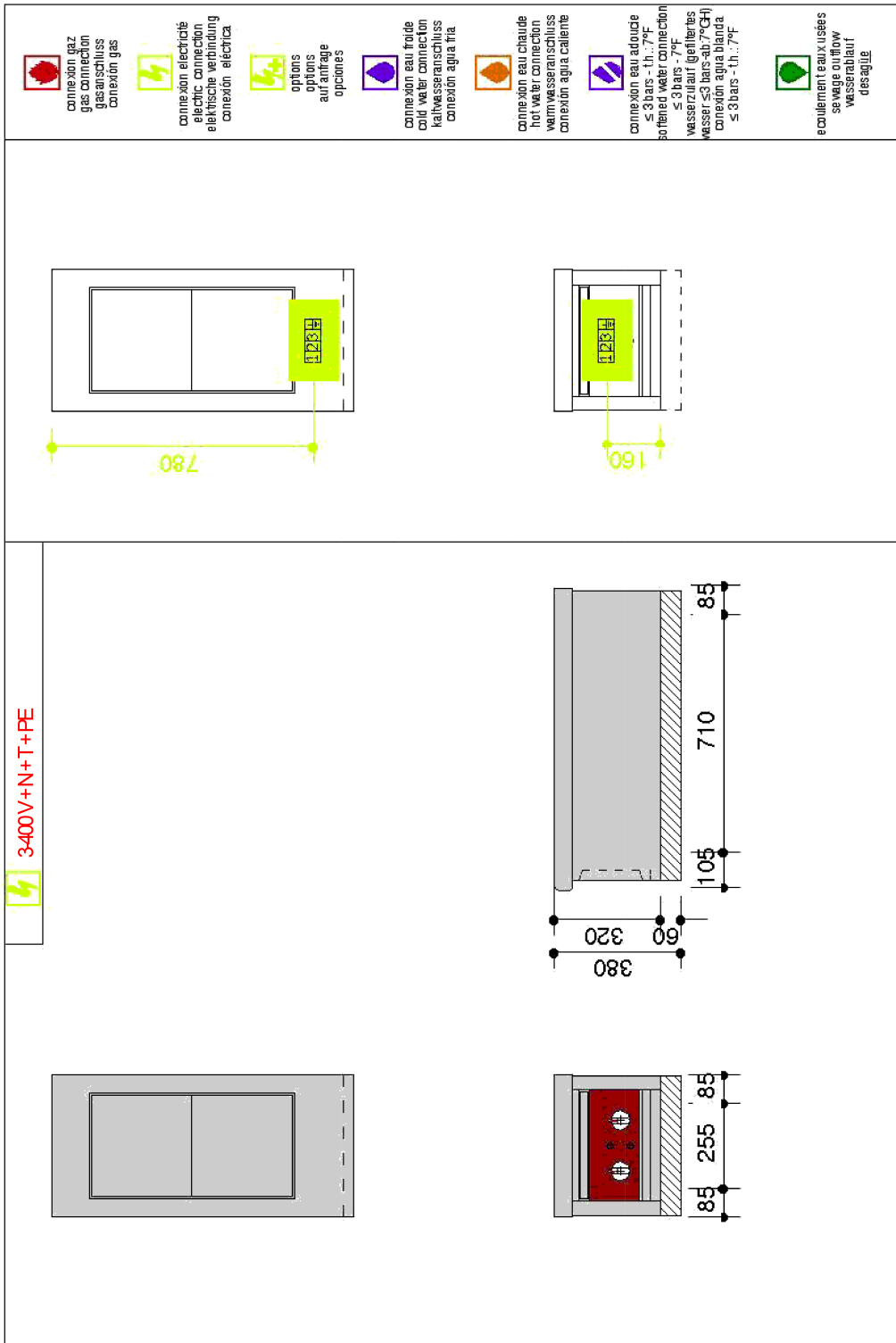
S/S rear panel fitted in factory W : 425 x H : 265 mm

V01290

ACCESSORIES

CODE





LES AUTHENTIQUES DE LA CUISSON

CHARVET

1170 rue principale - BP3 - 38850 Charavines - FRANCE

Tél: +33 (0)4 76 06 64 22 - info@charvet.fr

www.charvet.fr



YouTube

