



AMBIENT UNITS - NEUTRAL TOP ON DRAWERS GN2/1 IN BRIDGE UNIT

BRIDGE UNIT

Pro 900

Summary

Energy :

NEUTRAL

Code :

V01823

Designation :

R-TIROIR2/1

Dimensions (W x D x H) :
850 x 900 x 320/380 mm

Power :

Voltage/Electric p. :

Weight :

DEVICE DESCRIPTION

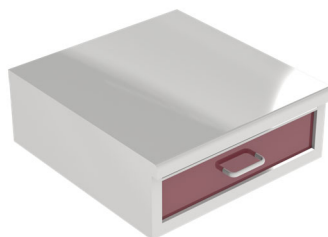
General description

Chassis :

One-piece seam welded 18-10 stainless steel chassis,
1,5 to 3 mm thick, assembled by high intensity electrical welds.

Top :

Top (frame) in 18-10 stainless steel,
30/10 thickness, with 55 mm front flanged edge and plywood.



Natural gas flow G20/20 :

Propane gas flow G31/37 :

Above :

. Neutral top in 18-10 stainless steel

Below:

. Drawer frame for GN2 / 1 container on runners with rollers and total clearance

. Enamelled steel facade panel

OPTIONS

CODE

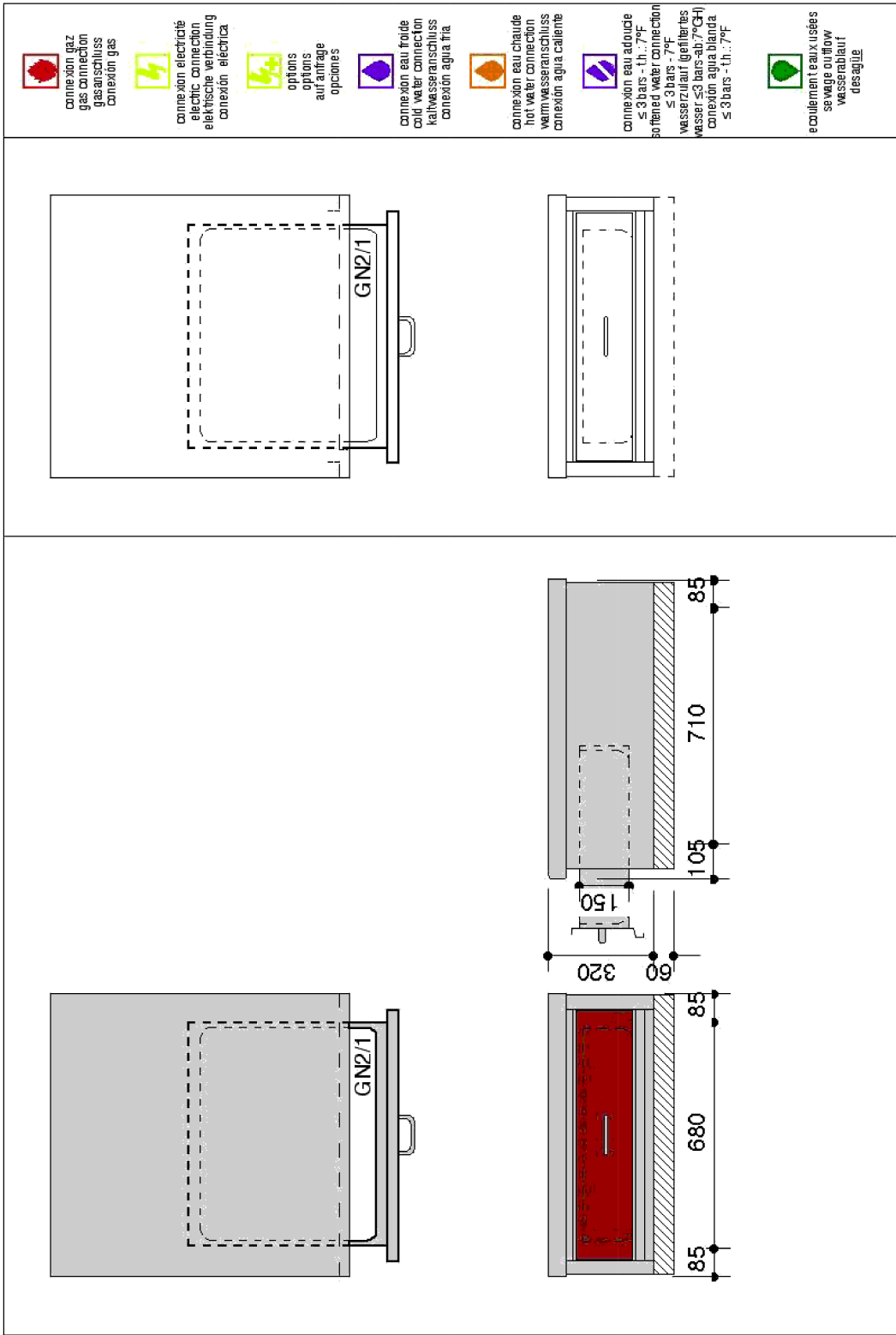
S/S rear panel fitted in factory L : 840/415 x H : 645 mm	V01182
Lower drawer with front panel similar to door(s) replace cupboard underneath drawer GN (T/P)	V02488
S/S rear panel fitted in factory W : 840/415 x H : 265 mm	V01290

ACCESSORIES

CODE

S/S plinth to clamp on legs H : 170 mm for standard legs	V01187





LES AUTHENTIQUES DE LA CUISSON

CHARVET

1170 rue principale - BP3 - 38850 Charavines - FRANCE

Tél: +33 (0)4 76 06 64 22 - info@charvet.fr

www.charvet.fr



YouTube

