

GENERAL DESCRIPTION

Chassis:
One-piece seam-welded AISI 304 stainless steel chassis, 1.5 to 3 mm thick.

- Top:
AISI 304 stainless steel top frame, 2 mm thick, with a 55 mm high edge having a 18 mm radius and return to underside.

- Legs:
200 mm high AISI 304 stainless steel legs, diam.: 60 mml. Adjustable PVC feet (0 / + 30).

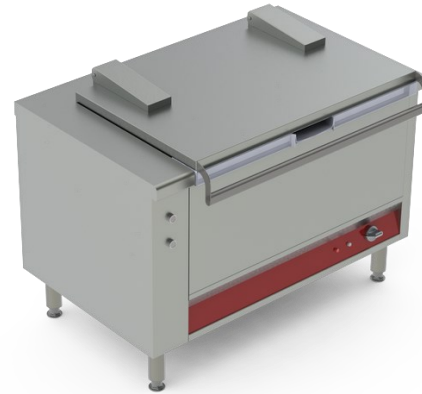
Natural gas flow
G20/20 :

-

Propane gas flow
G31/37 :

-

REFERENCE : E1SBE50i



APPLIANCE DESCRIPTION

Dimensions (mm) : W : 1275 x D : 800 x H : 900.

- Features :
 - . 50 dm² (100l) Stainless steel tank measuring W : 1015 x D : 490 x H : 250 (mm internal) with a 10 mm thick base and built-in front pouring spout.
 - . Electric tilting by electromechanical linear actuator
 - . Stainless steel lid with tubular insulated handle, stainless steel spring hinges.
 - . Set of flat heating element fixed underside the tank rated 15.3 kW
 - . Control by simmerstat 0-100% with "OFF" position
 - . Over heating safety cut-out device
 - . Light indicator








- Electrical rating : 15.3 kW / 3~400+E.

CODE	DIMENSIONS	ALIMENTATION	POWER	WEIGHT
V01701	1275 X 800 X 900	3~400V+E	ELEC : 15.3 kW	225 kg

OPTIONS	CODE
10 mm thick Bimetal bottom	V02043
Equipment for a 24V remote control	V00878
Terminal block for energy saver device	V02427
Pan tilt safety cut-out	V01061
Counter balanced lid	V00569
Removable stainless steel strainer	V02491
Stainless steel rear panel fitted in factory	V01183
Stainless steel plinth to clamp on legs	V01188
-	-
-	-

ACCESSORIES	CODE
Mixer HW/CW water tap 20x27 (360°)	V00561
Mixer HW/CW water tap 20x27 (180°)	V01651
Hole cut to suit client's tap	V01292



 <p>Connexion gaz Gas connection Gasanschluss Conexión gas</p>	 <p>Connexion électrique Electric connection Elektrische Verbindung Conexión eléctrica</p>	 <p>Options Options Auftrage Opciones</p>	 <p>Connexion eau froide Cold water connection Kaltwasseranschluss Conexión agua fría</p>	 <p>Connexion eau chaude Hot water connection Warmwasseranschluss Conexión agua caliente</p>	 <p>Connexion eau adoucie ≤ 3bars-t.h...7°F Softened water connection ≤ 3bars-7°F Wasserzulauf (gefiltertes wasser ≤ bars-ab: 7°GH) Conexión agua blanda ≤ 3 bars-t.h...7°F</p>	 <p>Écoulement eaux usées sewage outflow wasserablauf de-sague</p>
		<p>3~400V + N+PE P: 15,3 kW Ø 15x21 (1/2") Ø 15x21 (1/2") Ø 100 mm</p>				
<p>V01701 PRO800E1SBE50I</p>						

