



TILTING BRATT PANS - 60 dm²/120 L.

MANUAL WHEEL TILT

Pro 900

Summary

Energy :

GAS

Code :

V01509

Designation :

G1SBM60i

Dimensions (W x D x H) :
1275 x 900 x 900 mm
Power : 33,2 kW (gas)
Voltage/Electric p. : 1~230V+E / 0,001
Weight :

DEVICE DESCRIPTION

General description

Chassis :

Support frame in AISI 304 stainless steel, thickness 15 to 30/10, assembled by high intensity electric welds and lower rear release for passage of cables and supply tubes.

Top :

Top (frame) in AISI 304 stainless steel, 30/10 thick, with 55 mm front flanged edge and plywood.

Base :

Feet, height 200 mm, in AISI 304 stainless steel tube, diameter 60 mm with adjustable bases (0 / + 30).

Sauté pan:

. 60 dm² tank:

. 18-10 stainless steel tank - 10 mm thick bottom - 25/10 thick ferrule with bevelled front face with large integrated spout, internal dimensions (mm): W: 1015 x D: 590 x H: 250 mm.

. Cover in 18-10 stainless steel, 15/10 thick, with stainless steel spring hinges to keep it "open", and solid round stainless steel lever with insulating handle.

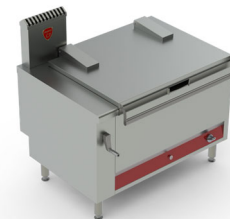
. Manual tilting by retractable flywheel, reducer, and drive by disengageable chain, and assistance by stainless steel spring.

Heating :

. Multi-ramp burner power: 33.2 kW in enamelled steel with pilot burner and thermocouple safety device.

. "Ignition - full fire - idle" valve with clearance adjustment.

. Electric ignition by high voltage transformer (1 ~ 230V + T) and spark plug, controlled by push button (manual ignition always possible).



Natural gas flow G20/20 :

3,51

Propane gas flow G31/37 :

2,58

OPTIONS

CODE

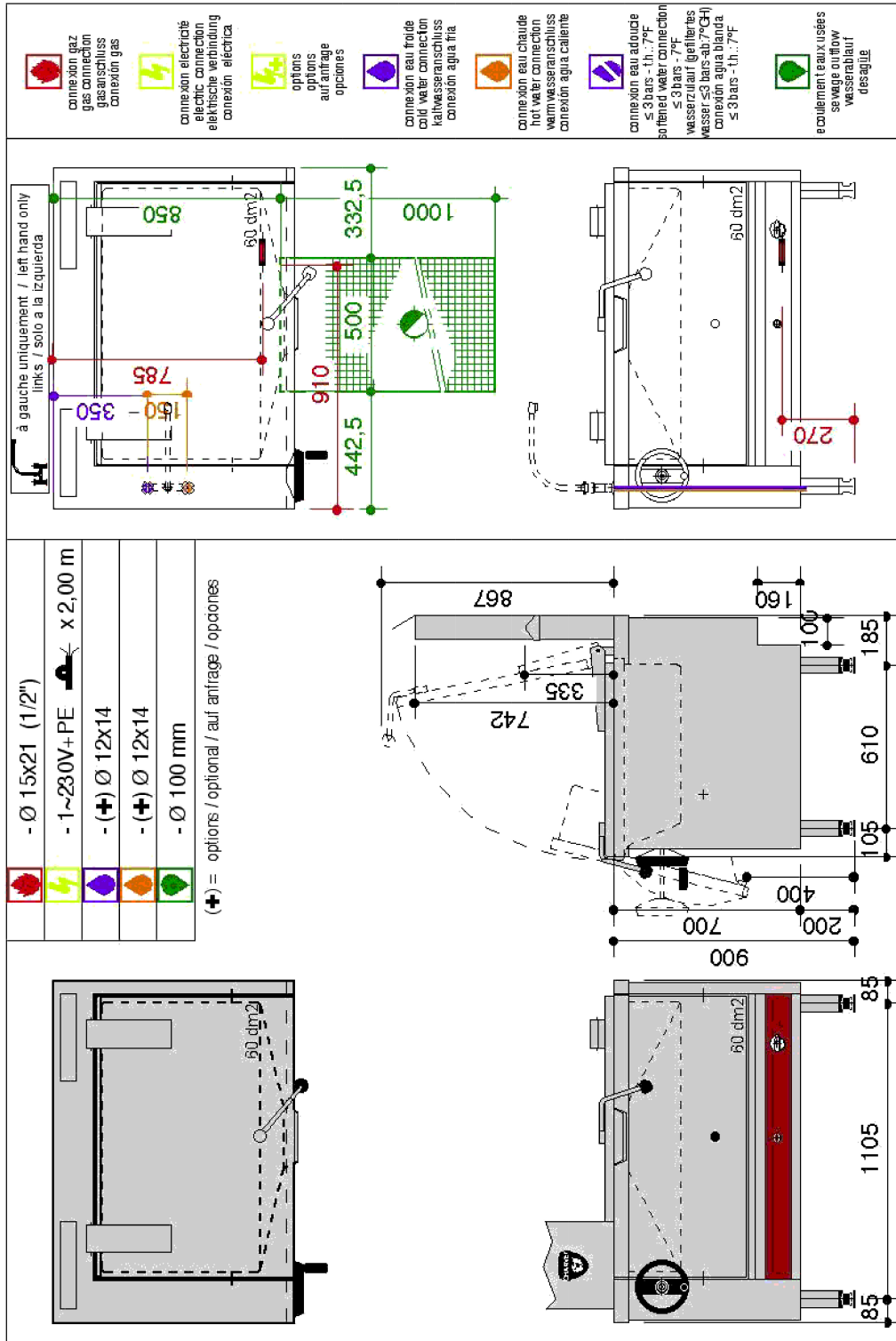
Supplement for a 10-mm-thick BIMETAL base - ins. AISI 304 S/S 2 mm thick/out. steel 8 mm thick	V02044
Energy regulator pan tilt safety cut-out included	V01164
Pan tilt safety cut-out included stop heating when tilting	V01060
Counter balanced lid in all positions	V00569
Removable s/s drainage Fitted in factory only	V02493
S/S rear panel fitted in factory W : 840/1265 x H : 645 mm	V01183
Mixer water tap CW/HW Ø 15x21 - swivel spout : 360° on the left side	V00561
Mixer water tap CW/HW Ø 15x21 - swivel spout : 180° on the left side	V01651
Hole cut to suit client's tap - tap supplied and fitted by client on the left side	V01292

ACCESSORIES

CODE

S/S clip on plinth panels H : 170 mm for standard legs	V01187
Bain-marie adapter collar For GN containers (not supplied)	V01852





LES AUTHENTIQUES DE LA CUISSON

CHARVET

1170 rue principale - BP3 - 38850 Charavines - FRANCE

Tél: +33 (0)4 76 06 64 22 - info@charvet.fr

www.charvet.fr



YouTube

