



## TILTING BRATT PANS - 40 dm<sup>2</sup>/80 L.

1~230V ELECTRIC MOTOR TILT

# Pro 900

## Summary

**Energy :**

**GAS**

**Code :**

**V01508**

**Designation :**

**G1SBE40i**

**Dimensions (W x D x H) :**  
850 x 900 x 900 mm  
**Power : 22,1 kW (gas)**  
**Voltage/Electric p. : 1~230V+E / 0,180**  
**Weight : 190 kg**

## DEVICE DESCRIPTION

### General description

**Chassis :**

**Support frame in AISI 304 stainless steel, thickness 15 to 30/10, assembled by high intensity electric welds and lower rear release for passage of cables and supply tubes.**

**Top :**

**Top (frame) in AISI 304 stainless steel, 30/10 thick, with 55 mm front flanged edge and plywood.**

**Base :**

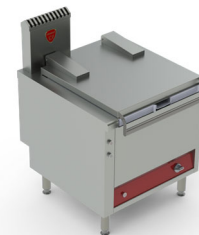
**Feet, height 200 mm, in AISI 304 stainless steel tube, diameter 60 mm with adjustable bases (0 / + 30).**

**Bratt pan :**

- . 80 L / 40 dm<sup>2</sup> - capacity tank
- . 18 10 stainless steel tank with 10 mm thick base - 2.5 mm thick collar with integral front pouring spout.
- . Internal dimensions : L : 666 x D : 590 x H : 250 mm
- . Lid in stainless steel 18-10, 1.5 mm thick, with a tubular handle and insulated nozzle on stainless steel spring hinges.
- . electric motor tilt controlled by "Up" and "Down" push buttons
- voltage: 3~400V+N+E.

**Control and safety :**

- . "Multi-ramp" burner rated 22.1 kW with flame failure safety cut out thermocouple and pilot light.
- . Recessed low and high heat control.
- . Electric ignition - 1~230V+E (manual ignition still possible) controlled by push button.



**Natural gas flow G20/20 :**

2,33

**Propane gas flow G31/37 :**

1,71

### OPTIONS

### CODE

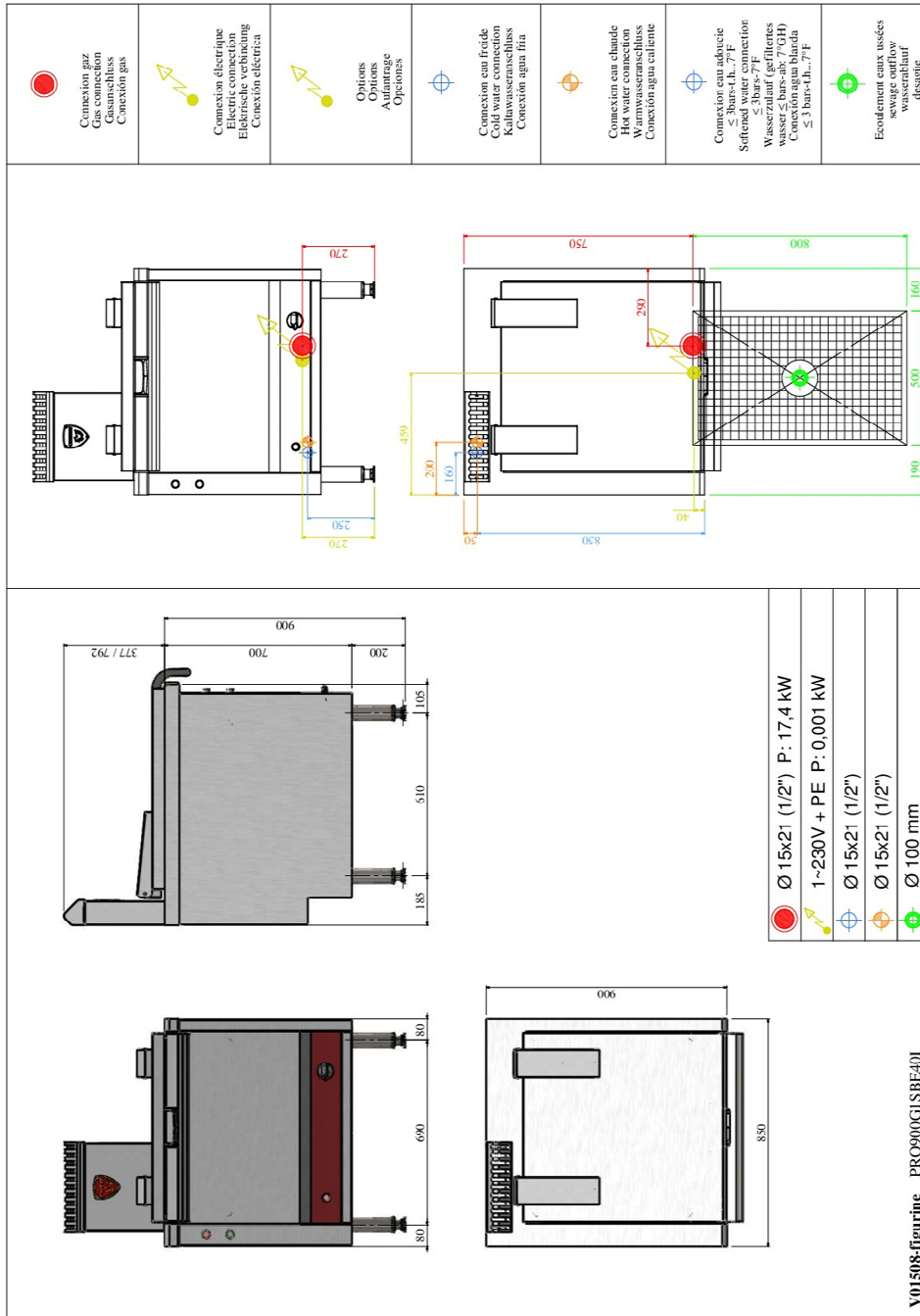
Supplement for a 10-mm-thick BIMETAL base - ins. AISI 304 S/S 2 mm thick/out. steel 8 mm thick	V02042
Energy regulator pan tilt safety cut-out included	V01164
Pan tilt safety cut-out included stop heating when tilting	V01060
Counter balanced lid in all positions	V00569
Removable s/s drainage Fitted in factory only	V02490
S/S rear panel fitted in factory W : 840/1265 x H : 645 mm	V01182
Mixer water tap CW/HW Ø 15x21 - swivel spout : 360° on the left side	V00561
Mixer water tap CW/HW Ø 15x21 - swivel spout : 180° on the left side	V01651
Hole cut to suit client's tap - tap supplied and fitted by client on the left side	V01292

### ACCESSORIES

### CODE

S/S clip on plinth panels H : 170 mm for standard legs	V01187
Bain-marie adapter collar For GN containers (not supplied)	V02992





LES AUTHENTIQUES DE LA CUISSON

**CHARVET**

1170 rue principale - BP3 - 38850 Charavines - FRANCE

Tél: +33 (0)4 76 06 64 22 - info@charvet.fr

[www.charvet.fr](http://www.charvet.fr)



YouTube

