



BOILING PANS DIRECT HEATING - 200 L.

RECTANGULAR TANK

Pro 900

Summary

Energy :

GAS

Code :

V01500

Designation :

G1MF200CD

Dimensions (W x D x H) :

850 x 900 x 900 mm

Power : 31,4 kW (gas)

Voltage/Electric p. : 1~230V+E / 0,001

Weight :

DEVICE DESCRIPTION

General description

Chassis :

Support frame in AISI 304 stainless steel, thickness 15 to 30/10, assembled by high intensity electric welds and lower rear release for passage of cables and supply tubes.

Top :

Top (frame) in AISI 304 stainless steel, 30/10 thick, with 55 mm front flanged edge and plywood.

Base :

Feet, height 200 mm, in AISI 304 stainless steel tube, diameter 60 mm with adjustable bases (0 / + 30).

Boiling pans :

. rectangular tank capacity 200 liters :
. 20/10 thick stainless steel pan, bottom of the pan 316 L stainless steel and 18-10 stainless steel ferrule 20/10 thickness, angled vertical and horizontal rounded, sloping bottom.
. removable strainer in 18-10 stainless steel.

. Chrome-plated bronze drain valve on the front with folding handle.

. internal dimensions (mm) : L : 710 x d: 550 x h: 525

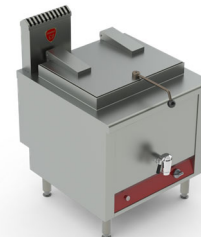
. cover in 18-10 stainless steel 15/10 thickness with hinge Charvet (heel and spring) for "open" hold, and stainless steel round maneuvering lever, with insulating handle.

Heater :

. multi-ramp burner power: 11.6 kW in enamelled steel with pilot and safety by thermocouple.

. "ignition - full fire - idle" valve with clearance adjustment.

. electric ignition by high voltage transformer 1 ~ 230V + E and spark plug, controlled by push button (manual ignition always possible).



Natural gas flow G20/20 :

3,32

Propane gas flow G31/37 :

2,44

OPTIONS

CODE

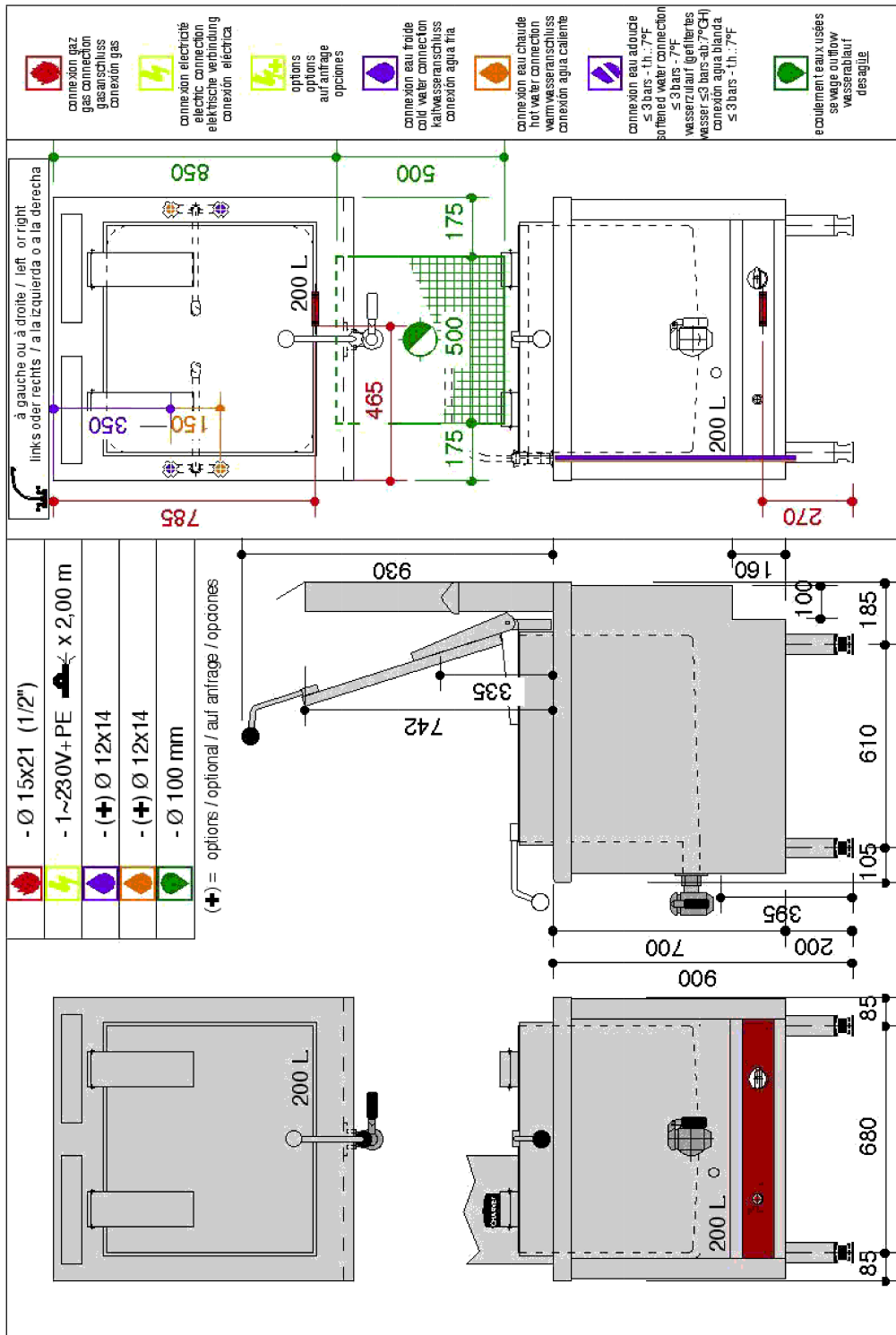
AISI 316 L tank for saline and/or acid foods	V01433
Sequential regulation 1~230V+E /0,008 kW	V00568
Counter balanced lid - in all positions	V00569
S/S rear panel fitted in factory W : 415/840 x H : 645 mm	V01182
Mixer water tap CW/HW Ø 15x21 swivel spout : 360°	V00561
Mixer water tap CW/HW Ø 15x21 swivel spout : 180°	V01651
Hole cut to suit client's tap	V01292

ACCESSORIES

CODE

S/S clip on plinth panels H : 170 mm for standard legs	V01187





LES AUTHENTIQUES DE LA CUISSON

CHARVET

1170 rue principale - BP3 - 38850 Charavines - FRANCE

Tél: +33 (0)4 76 06 64 22 - info@charvet.fr

www.charvet.fr



YouTube

